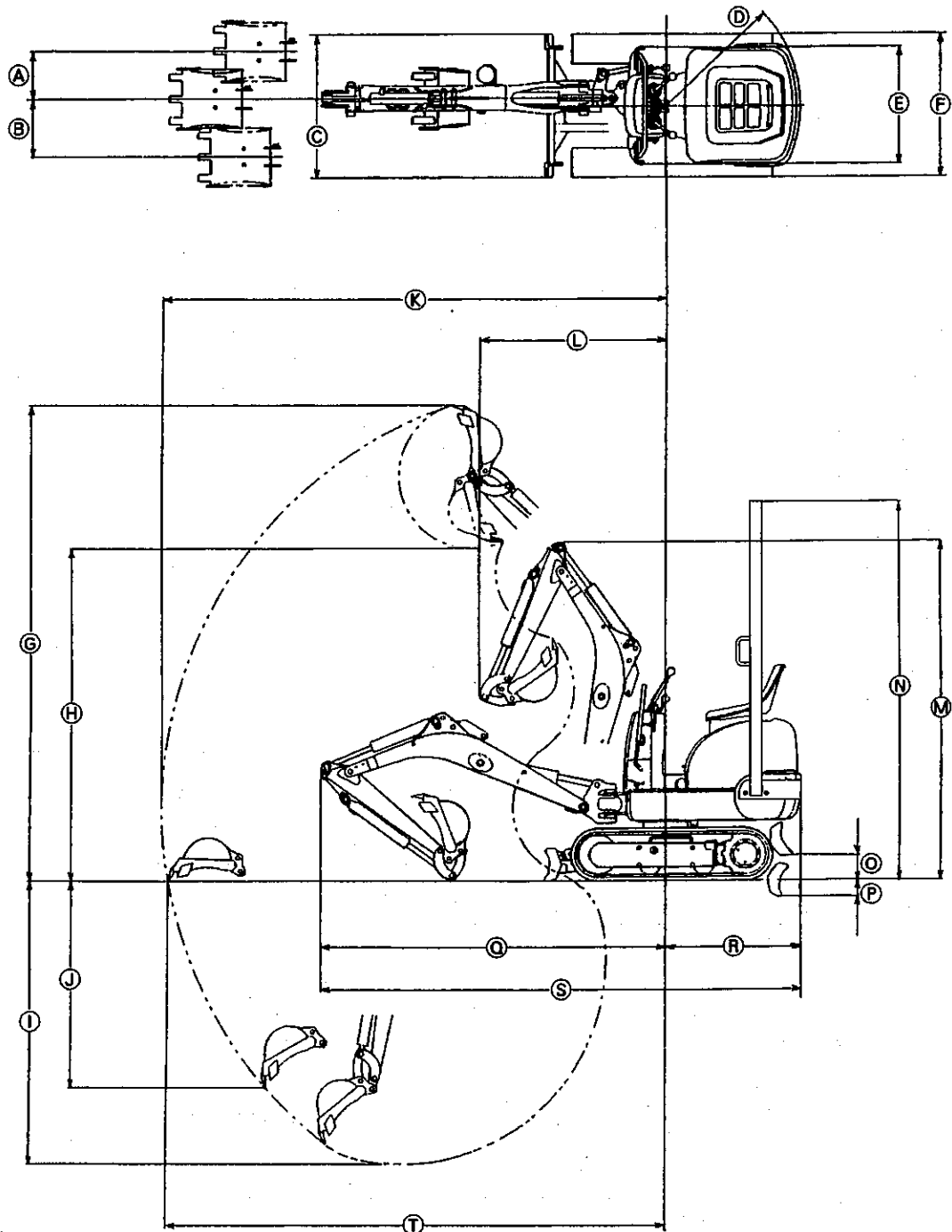


MAIN DIMENSIONS



L-3014C 改

mm

A	B	C	D	E	F	G	H	I	J	K	L	M	N	O	P	Q	R	S	T
280	350	700/ 860	800	700	700/ 860	2885	2020	1705	1235	3070	1140	2055	2070	155	100	2110	800	2910	3030

LIFTING CAPACITY

1. The lifting capacities are based on ISO 10567 and do not exceed 75% of the static tilt load of the machine or 87% of the hydraulic lifting capacity of the machine.
2. The strokes are as follows.
 - 1) The load point corresponds to the front bolt part of the arm.
 - 2) The machine positions are (i) over - front (Blade up), (ii) over - front (Blade down), and (iii) over - side.
 - 3) The operating cylinder is the boom cylinder.
3. The bucket of the excavator, the hook, the sling and other lifting accessories are taken into consideration for the loads.

Machine conditions:

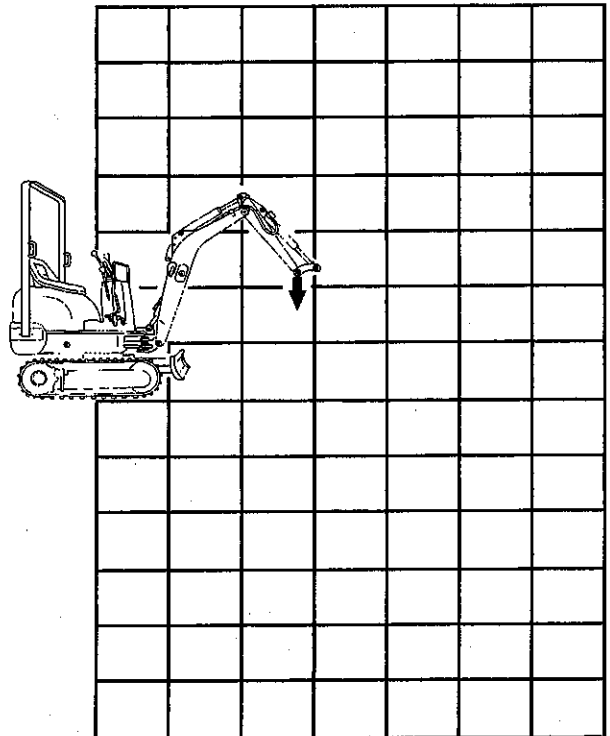
No bucket, all others according to the standard regulations.



WARNING:

To avoid personal injury or death:

- It is forbidden to lift loads greater than those values mentioned in the lifting capacity tables.
- The values mentioned in the table are valid only on even, hard grounds. When lifting on soft ground, the machine can tilt over due to the fact that the load is concentrated only on one side of the machine.
- The table values are calculated at the end of the arm without the bucket. In order to find the allowable loads for machines with bucket, the bucket weight must be subtracted from the values in the table.



LIFTING CAPACITY TABLES

LOAD POINT HEIGHT (m)	LOAD RADIUS (m)							kN (ton)
	0	0.5	1	1.5	2	2.5	3	
3								
2.5								
2				2.1 (0.22)				
1.5				2.3 (0.23)	1.5 (0.16)			
1				2.3 (0.24)	1.5 (0.15)	1.0 (0.11)		
0.5				2.1 (0.22)	1.4 (0.14)	1.0 (0.10)		
0				2.0 (0.21)	1.4 (0.14)	1.0 (0.10)		
-0.5			3.5 (0.36)	2.0 (0.20)	1.3 (0.14)			
-1				1.7 (0.17)	1.1 (0.11)			
-1.5								
-2								
-2.5								
-3								

(i) OVER - FRONT (BLADE UP)

LOAD POINT HEIGHT (m)	LOAD RADIUS (m)							kN (ton)
	0	0.5	1	1.5	2	2.5	3	
3								
2.5								
2				2.1 (0.22)				
1.5				2.1 (0.21)	1.3 (0.13)			
1				2.0 (0.20)	1.3 (0.13)	0.9 (0.09)		
0.5				1.8 (0.18)	1.2 (0.12)	0.9 (0.09)		
0				1.7 (0.17)	1.1 (0.12)	0.8 (0.09)		
-0.5				3.1 (0.32)	1.7 (0.17)	1.1 (0.11)		
-1					1.7 (0.17)	1.1 (0.11)		
-1.5								
-2								
-2.5								
-3								

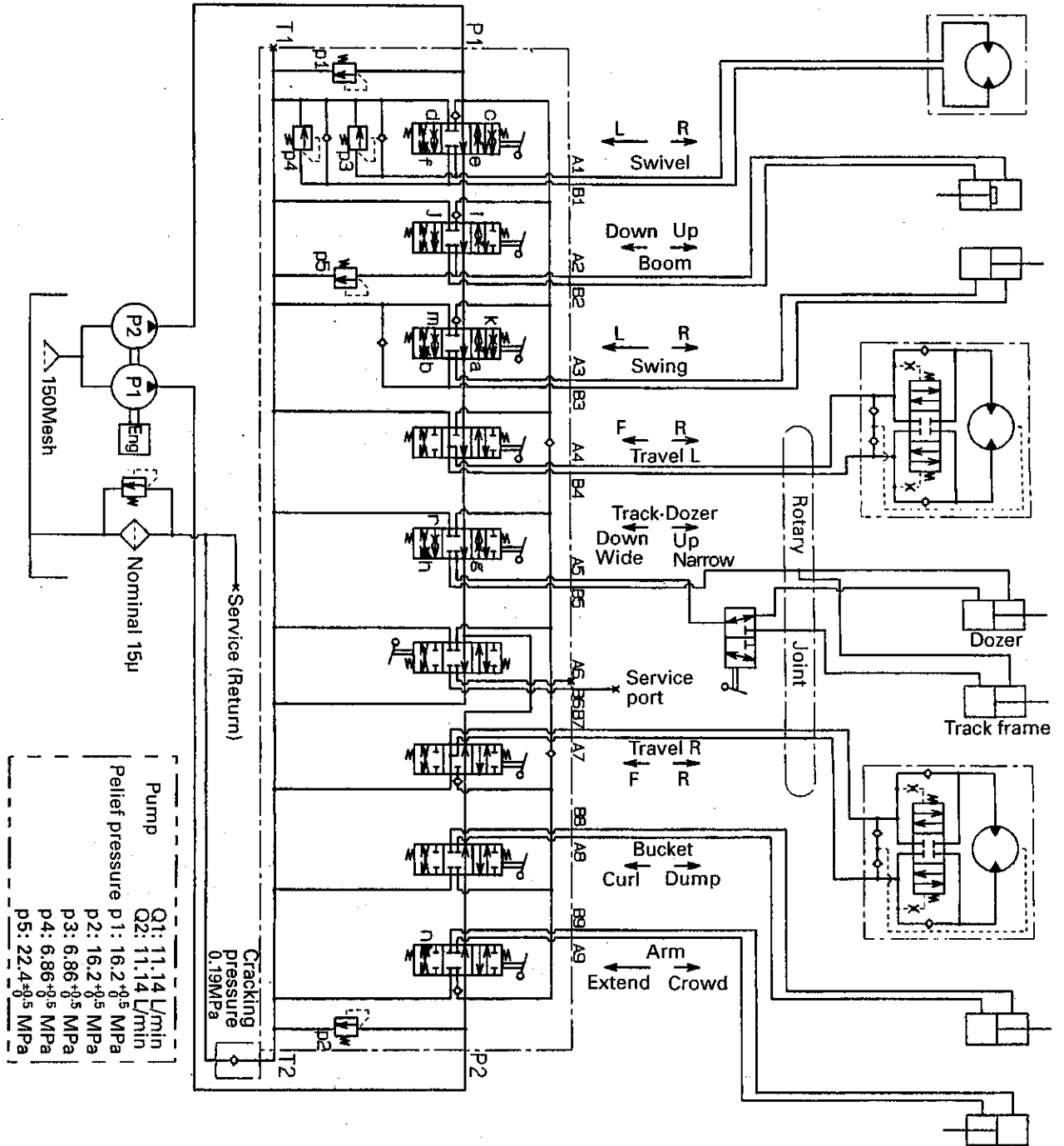
(iii) OVER - SIDE (TRACK WIDTH 860mm)

LOAD POINT HEIGHT (m)	LOAD RADIUS (m)							kN (ton)
	0	0.5	1	1.5	2	2.5	3	
3								
2.5								
2				2.1 (0.22)				
1.5				2.3 (0.23)	2.1 (0.21)			
1				3.1 (0.31)	2.2 (0.23)	1.7 (0.17)		
0.5				3.5 (0.36)	2.3 (0.23)	1.6 (0.17)		
0				3.1 (0.32)	2.1 (0.22)	1.4 (0.15)		
-0.5			3.5 (0.36)	2.5 (0.25)	1.7 (0.18)			
-1				1.7 (0.17)	1.1 (0.11)			
-1.5								
-2								
-2.5								
-3								

(ii) OVER - FRONT (BLADE DOWN)

SCHEMATICS

HYDRAULIC



SCHEMATICS

HYDRAULIC

